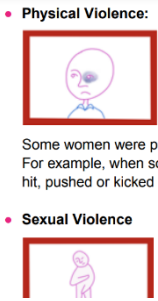
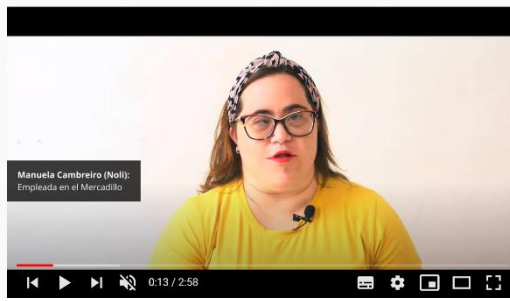




**Neglect and discrimination. Multiplied**  
How Covid-19 affected the rights of people with intellectual disabilities and their families



• **Physical Violence:**  
Some women were physically hurt. For example, when someone punched, hit, pushed or kicked them.

• **Sexual Violence**

# Include

Special issue for the European Day of Persons with Disabilities 2020

- **European Disability Strategy expectations**
- **Impact of Covid pandemic on the rights of people with intellectual disabilities**
- **Employment**
- **Violence against women with intellectual disabilities**

## European Disability Strategy



# The strategy needs easy-to-read version!



The European Disability Strategy is an important text. It says what the European Union has to do to make sure people with disabilities in Europe get the same rights as everyone else.

We think that everyone should be able to read the European Disability Strategy.



This is why we want a version in easy-to-read of the European Disability Strategy.

This will make it possible for people with intellectual disabilities to read the strategy. Then they can learn more about their rights.

[Read all our recommendations.](#)

## Covid pandemic

# Speech of László Bercse at the European Day of Persons with Disabilities 2020



László Bercse is the Chair of the [European Platform of Self-Advocates](#) and the Vice-President of [Inclusion Europe](#).

During the Corona crisis, persons with intellectual disabilities had to adapt, like everybody else.

Our families had to adapt.

Our service providers had to adapt.

You really have to admire the people with intellectual disabilities, the family members supporting them, the staff in-services.

As a [self-advocate](#), I was able to do a lot of tasks.  
I was in contact with other self-advocates across Europe.

This was different for many people with  
intellectual disabilities in Europe.

Many thousands have faced complete isolation,

especially those segregated in residential care institutions.

The pandemic means losing our support networks.

Not being able to see our family and friends.

Not being able to go to work.

Many people with intellectual disabilities have lost their jobs.

**Our needs were often not considered when preparing the measures and solutions. Information was mostly not accessible to us, provided only in difficult language.**

Persons living in institutions were not able to get out for a long time.

Many still aren't.

Many people with intellectual disabilities were denied proper health care when sick with Covid.

Many people with intellectual disabilities died from the Coronavirus

**In England, they died at 3 times higher rate than the general population.**

**How is it in other countries?**

Especially where there are a lot of people in residential care institutions?

We don't know, because other countries do not report this information!

It is important to understand that the bad things happening during the pandemic are not new to us.

We already face segregation, isolation, lack of health care...

**The pandemic made existing problems, discrimination and segregation worse.**

It made this easier to see – I hope also for the governments.

### What needs to be done now?

Governments must learn from these experiences.

Governments and the [European Union](#) must investigate properly the things that happened to people with intellectual disabilities.

The European Union and national money for economic recovery must reach people with intellectual disabilities and families.

### The money must go into support, especially in inclusive education

and in employment for people with intellectual disabilities.

The money must go into community-based services.

People with intellectual disabilities must be able to move out of the segregated residential care institutions.

Read the speech in full + find it in other languages [here](#).

## [Read Inclusion Europe report on Covid impact!](#)



### Neglect and discrimination. Multiplied

How Covid-19 affected the rights of people with intellectual disabilities and their families

[Read Inclusion Europe report on Covid impact!](#)

## Employment

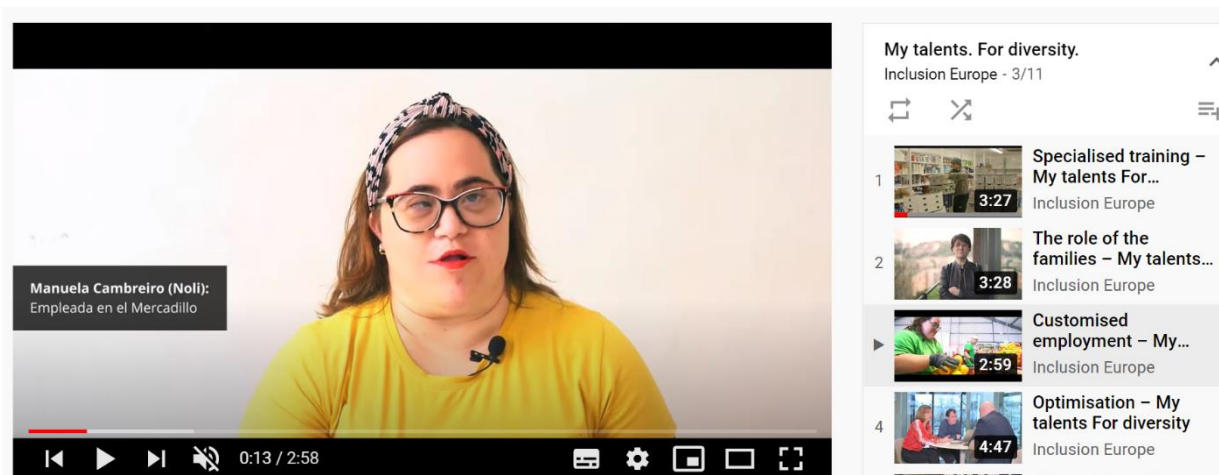
# Developing employment opportunities for people with intellectual disabilities

**"Job is important for inclusion.  
If you earn money, you become  
(not only financially) independent."**

Seminars covering employment opportunities for people with intellectual disabilities brought many insights into what works and what challenges there are.

From topics such as job carving, through supported employment to job opportunities within the EU institutions, the seminars bring you successful practice from around Europe as well as EU policy context. [View them here.](#)

There are also [guidelines for employers](#) and useful [videos](#) to promote employment of people with intellectual disabilities.



## Violence against women

# Stop the violence now!

## "Women with intellectual disabilities are subjected to violence at home, in communities and in care institutions"

"Women with intellectual disabilities are subjected to violence at home, in communities and in care institutions"

"There is lack of support for victims with intellectual disabilities. As people with intellectual disabilities are not educated to recognise violence, they do not know how to report it."

"Big problem is a lack of trust in people with intellectual disabilities. When they do report violence, they are not believed. The abuser is often believed. Especially in cases when the abuser is the professional (care worker, psychologist)."

- **Physical Violence:**



Some women were physically hurt. For example, when someone punched, hit, pushed or kicked them.

- **Sexual Violence**



Some women were touched in their private parts but they did not want this.

"Many women are often subjected to violence for a very long periods of time."

Excerpts from Senada Halilčević's speech at a recent seminar.

[Read our report on violence against women with intellectual disabilities.](#)



## Ambitions. Rights. Belonging.

Inclusion Europe is the European movement of people with intellectual disabilities and their families. Inclusion Europe has members in 40 European countries. Inclusion Europe represents over 20 million citizens.



**Website:** [inclusion-europe.eu](http://inclusion-europe.eu)



**Email:** [secretariat@inclusion-europe.org](mailto:secretariat@inclusion-europe.org)



**Telephone:** +32 25 02 28 15



**Address:** Avenue des arts 3, 1210 Brussels, Belgium



**Facebook:** [facebook.com/inclusion europe](https://facebook.com/inclusion europe)



**Twitter:** [twitter.com/InclusionEurope](https://twitter.com/InclusionEurope)